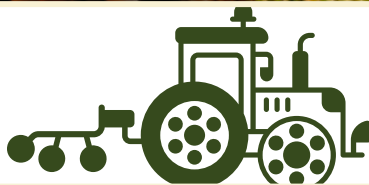


ANR Newsletter 2023 VOLUME 1

SHANNON DIETZ

COUNTY EXTENSION AGENT

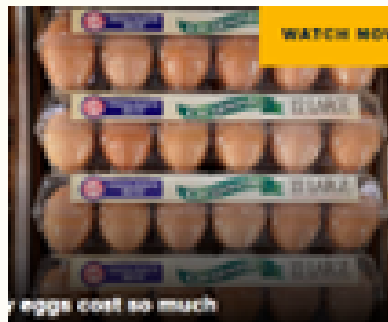


Texas A&M AgriLife Extension provides equal opportunities in its programs and employment to all persons, regardless of race, color, sex, religion, national origin, disability, age, genetic information, veteran status, sexual orientation, or gender identity. The Texas A&M University System, U.S. Department of Agriculture, and the County Commissioners Courts of Texas Cooperating.

Happy New Year!

I hope everyone's New Year has started with a bang! We have got so much exciting news to share. Please do not hesitate to reachout to me or a member of our dedicated team if you have questions or concerns regarding our first quarter Newsletter.

Shannon



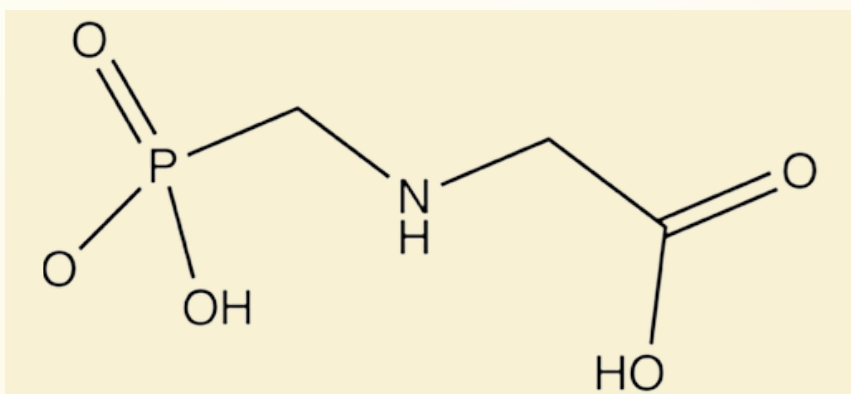
Here's why egg prices surged in 2022

Those elevated costs could last into the first quarter of 2023, expert says

KEY POINTS: (1). Egg prices jumped 49% in the past year, more than any other grocery category, according to the consumer price index. (2). Bird flu is the primary culprit, economists said. Millions of egg-laying hens died in 2022 as a result of the deadliest outbreak of avian flu in U.S. history. (3). Perhaps counterintuitively, chicken prices have been declining. Chickens raised for meat consumption aren't as affected by bird flu, economists said.

(Click the link below for details)

<https://www.cnn.com/2022/12/29/why-egg-prices-have-been-rising.html>



Glyphosate (Roundup): Understanding

Risks to Human Health

A review of the risk assessment process for evaluating the potential of glyphosate to cause adverse effects on human health.

What is glyphosate?

Glyphosate is a common herbicide ("weed-killer") used in crop and non-crop lands, including residential areas such as home lawns and gardens. Glyphosate was first registered in the United States in 1974 as the active ingredient in Roundup but is now available in many commercial herbicide products. There is currently increased concern about glyphosate impacts on human health, including risks of cancer. This article reviews the risk assessment process for evaluating the potential of glyphosate to cause adverse effects on human health and aims to improve understanding of recent studies on its carcinogenicity.

(Click the link below for detail)

<https://extension.psu.edu/glyphosate-roundup-understanding-risks-to-human-health>



Cattle Handling Pointers

Stockmanship and Low-Stress Handling

*Ron Gill, PhD, Rick Machen, PhD,
Professor and Extension Specialists
Texas A&M AgriLife Extension*

Understanding Cattle Behavior

There are three basic means of communicating with livestock. Very simply they are:

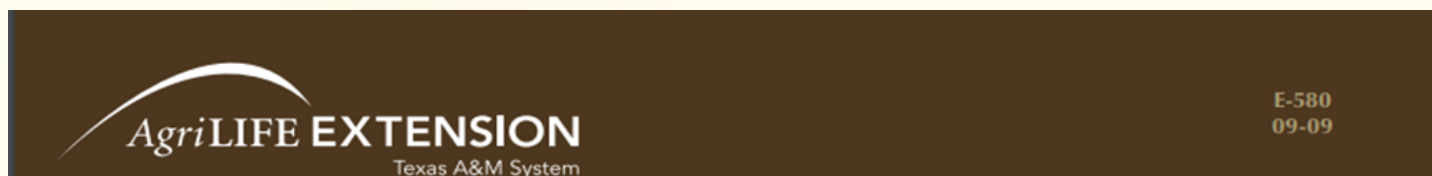
• Sight | • Sound | • Touch

Cattle prefer to communicate through line of sight. Good stockmanship and low-stress handling can only be accomplished when a complete understanding of how a prey animal responds to line of sight and adoption of these in livestock handling are in place.

Understanding the link between cattle's eyesight and their movement and behavior is critical in handling and in facility design.

(Click the link below for details)

<https://animalscience.tamu.edu/wp-content/uploads/sites/14/2012/04/Cattle-Handling-Pointers-v1-030714.docx-1.pdf>



Basics of Cattle Immunity

Tom Hairgrove and Steve Hammack

Program Coordinator for Livestock and Food Animal Systems and Professor Emeritus and former Extension Beef Cattle Specialist, The Texas A&M System.

When establishing a vaccination program, it is important to understand how animals naturally protect themselves from infection and how vaccination and other management practices enhance that protection. There are three major ways the body defends itself against infectious organisms. ***(Click the link below for details)***

<https://animalscience.tamu.edu/wp-content/uploads/sites/14/2012/04/beef-basics-cattle-immunity.pdf>



Life Jackets

Accidents on the water happen fast. U.S. Coast Guard statistics show that drowning was the reported cause of death in 79% of recreational boating fatalities in 2019, and that 86% of those who drowned were not wearing a life jacket. That's why boating safety advocates continue to push for increased and consistent life jacket wear on the water. Worry less when you Wear It!

(Click the link below to read more)

<https://tpwd.texas.gov/education/boater-education/lifejacket>

Making Some Sense Out of Ground Beef Labeling

Fresh Ground Beef

**Davey Griffin, Professor and Extension Meat Specialist Texas
A&M Agrilife Extension Service**



When consumers go to the grocery store, they are confronted with a variety of items from which to select. One of the most commonly purchased items from the beef section is ground beef. Because of its functionality in a multitude of different entrees items, ground beef is the largest single beef item sold (by volume) in most food stores. Although most consumers enjoy having a variety of items to choose from, ground beef options are sometimes confusing.

(Click the link below to read more)

<https://meat.tamu.edu/ground-beef-labeling/>



Potential changes to saltwater fishing regulations

By Jessica Domel
Multimedia Reporter

To match federal fishing regulations, the Texas Parks and Wildlife Department (TPWD) is proposing a few changes to the state's saltwater fishing regulations for the 2023-24 season .

Click the link below to read more:

<https://texasfarmbureau.org/potential-changes-to-saltwater-fishing-regulations/>



Feral hog study group establishes priorities for policy development

American Farm Bureau Federation organized a Feral Hog Study Group to share updates, data and information on ground-level approaches to feral hog management.

Click the link below to read more:

<https://texasfarmbureau.org/feral-hog-study-group-establishes-priorities-for-policy-development/>



Back Yard Chickens Part 1:

After egg prices hit record highs in late 2022 and early 2023, having a flock of backyard chickens to provide a personal supply of eggs can be tempting.

<https://vetmed.tamu.edu/news/pet-talk/backyard-chickens-part-1/?fbclid=IwAR3qyKpkLJRjbmknjMp3Bxg7EiITQuiothW1SU5cndMqrVOWApMegann2M4>



Back Yard Chickens Part 2:

Three red chickens in a green grassy field
After researching, preparing for, and buying healthy chickens, first-time flock owners will need to know all that is involved in keeping their backyard birds healthy.

<https://vetmed.tamu.edu/news/pet-talk/backyard-chickens-part-2/?fbclid=IwAR3qyKpkLJRjbmknjMp3Bxg7EiITQuiothW1SU5cndMqrVOWApMegann2M4>

BETTER LIVING FOR TEXANS

TEXAS A&M AGRILIFE EXTENSION

f @BETTERLIVINGFORTEXANS

@BETTERTEXANS

March 2023

Recipe of the Month

Recipe and photo from *MyPlate Kitchen* at [MyPlate.gov](https://www.myplate.gov)

Whole Grain Strawberry Pancakes

Whole wheat flour adds a nutty flavor and texture to these great-tasting pancakes. Dish these up with berries and a glass of milk on the side for a wholesome start to your day!

Serves: 7

Ingredients:

- 1½ cups whole wheat flour
- 3 tablespoons sugar
- 1 teaspoon baking powder
- ½ teaspoon baking soda
- ½ teaspoon salt
- 3 eggs
- 1 container vanilla low-fat yogurt (6 ounces)
- ¾ cup water
- 3 tablespoons vegetable oil
- 1¼ cups sliced fresh strawberries
- 1 container strawberry low-fat yogurt (6 ounces)



Directions:

1. Heat griddle to 375°F or heat 12-inch skillet over medium heat. Grease with oil if necessary (or spray with cooking spray before heating).
2. In large bowl, mix flour, sugar, baking powder, baking soda and salt; set aside.
3. In medium bowl, beat eggs, vanilla yogurt, water and oil until well blended.
4. Pour egg mixture all at once into flour mixture; stir until moistened.
5. For each pancake, pour slightly less than ¼ cup batter from cup or pitcher onto hot griddle. Cook pancakes 1 to 2 minutes or until bubbly on top, puffed and dry around edges. Turn; cook other sides 1 to 2 minutes or until golden brown.
6. Top each serving (2 pancakes) with ¼ cup sliced strawberries and 1 to 2 tablespoons strawberry yogurt.

Nutrients Per Serving:

260 calories, 9 g total fat, 0 g saturated fat, 93 mg cholesterol, 390 mg sodium, 36 g carbohydrates, 4 g fiber, 16 g total sugar, 10 g added sugar, and 9 g protein

Total Cost: \$\$\$\$

TEXAS A&M
AGRILIFE
EXTENSION

BETTER LIVING FOR TEXANS

This material was funded by USDA's Supplemental Nutrition Assistance Program – SNAP.
This institution is an equal opportunity provider and employer.

Texas A&M AgriLife Extension is an equal opportunity employer and program provider.
The Texas A&M University System, U.S. Department of Agriculture, and the County Commissioners Courts of Texas Cooperating.



Lora Jorgensen-Tjornehoj
EA-BLT
Master of Public Health
BS-Medical Microbiology&Immunology



Jasmine Carey
EA-BLT
MPH in Health Promotion &
Community Health



HARRIS COUNTY MASTER GARDENERS 2023 PLANT SALES

For more information go to: hcmga.tamu.edu/plant-sales/
For questions, please email: plantsales.harrishort@gmail.com



NORTHWEST SALES

9:30 a.m. – 1:30 p.m. or until supplies last

New location:

5373 Franz Rd, Katy, TX @ St. Paul's Episcopal Church

February 11th

Fruit Tree Sale

All HCMGA citrus plants will be sold only at this location.

April 22nd

Spring Sale -

Perennials & Peppers

Cy-Fair Home and Outdoor Living Show at the

BERRY CENTER

9:00 a.m. – 1:00 p.m. or until supplies last

8877 Barker Cypress Rd., Cypress, TX 77433

March 25th & 26th

Spring Sale - Fruit Trees & Perennials

SOUTHEAST SALES

Citrus not available at this location.

9:00 a.m. – 1:00 p.m. or until supplies last

Genoa Friendship Gardens (GFG), 1210 Genoa Red Bluff Rd., Houston, 77034

Online sale at: <https://hcmga.tamu.edu/shop/>

February 18th & 20th

Tomato Sale

Online store opens Feb. 1st - Feb. 16th

Pick up day - Feb. 18th

March 18th & 20th

Fruit Tree Sale

Online store opens Mar. 1st - Mar. 16th

Pick up day - Mar. 18th

An in-person sale option is available for remaining plant inventory on all Saturday pickup days.
Southeast Sale ONLY: Order online for the best selections. Monday is our Open Garden Day;
tours of our demonstration gardens and plant trials will be provided along with plant sales.

April 15th & 17th

Perennials & Peppers

Online store opens Apr. 1st - Apr. 13th

Pick up day - Apr. 15th

May 20th & 22nd

Vegetables & Herbs

Online store opens May 1st - May 18th

Pick up day - May 20th



Individuals with disabilities who require an auxiliary aid, service or accommodation in order to participate are encouraged to contact the County Extension Office prior to the sale to determine how reasonable accommodations can be made.

https://hcmga.tamu.edu/files/2023/03/2023_Plant_Sale_flyer_JAN_12_FINAL-1.pdf

Green Thumb 2023 Gardening Series

The Texas A&M AgriLife Extension Service and the Harris County Master Gardeners are pleased to offer the **FREE Green Thumb Gardening Series of Lectures**
Got questions? Go to hcmga.tamu.edu/ask-a-question/

Second Monday, 10:00 A.M. – 11:30 A.M.

Houston Community College @Home Gardening Series

Register in advance to receive the link: hccs.edu/community-learning-workshops

Second Monday of each month

January 9 – Soil and Food Web

February 13 – Spring Vegetable Gardening

March 20 – Benefits of Growing Native Plants

April 10 – Tips for Great Lawns

May 8 – Gardening with Less Water

June 12 – Pollinator Gardening

July 10 – Fall Vegetable Gardening

August 14 – Exploring Ethnic Vegetables

September 11 – Growing Roses in Texas

October 9 – Trees and Tree Care

Third Tuesday, 11:00 A.M. – 12:00 P.M.

Harris County Public Library Facebook Live

No reservation required – facebook.com/harriscountypub/events/

Third Tuesday of each month

January 17 – Soil and Food Web

February 21 – Spring Vegetable Gardening

March 21 – Benefits of Growing Native Plants

April 18 – Tips for Great Lawns

May 16 – Gardening with Less Water

June 20 – Pollinator Gardening

July 18 – Fall Vegetable Gardening

August 15 – Exploring Ethnic Vegetables

September 19 – Growing Roses in Texas

October 17 – Trees and Tree Care

Click the link below for details:

<https://hcmga.tamu.edu/2023-green-thumb-gardening-series/>



Texas A&M AgriLife Extension Service provides equal opportunities in its programs and employment to all persons, regardless of race, color, sex, religion, national origin, disability, age, genetic information, veteran status, sexual orientation, or gender identity. The Texas A&M University System, U.S. Department of Agriculture, and the County Commissioners Courts of Texas cooperating. Individuals with disabilities, who require an auxiliary aid, service or accommodation in order to participate in any Extension activities, are encouraged to contact the Harris County Extension Office at 713-274-0950 for assistance five working days prior to the activity.





Reference - Page 1

[:https://ensia.com/features/developing-world-pesticides/](https://ensia.com/features/developing-world-pesticides/)

TEXAS A&M AGRILIFE EXTENSION



Shannon Dietz

Harris County Extension Agent
Agriculture & Natural Resources

shannon.dietz@ag.tamu.edu

Ph: 713-274-0950

SOCIAL MEDIA



<https://harris.agrilife.org>



[/HarrisCountyANR](https://www.facebook.com/HarrisCountyANR)



[@HarrisExtension](https://twitter.com/HarrisExtension)



[Harris County Extension
Horticulture](https://www.youtube.com/HarrisCountyExtensionHorticulture)



[Home Grown Podcast](#)